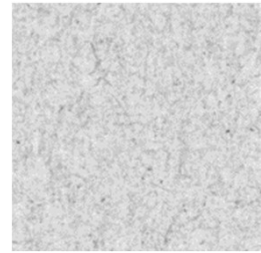




FIBRE based
solutions



DOMAS*multispec* Modul: Blackening



Your key to objective quality control

Blackening refers to the visually uneven appearance of highly smoothed paper, which has a negative effect on paper quality. It is caused by locally limited increased transparency of the paper. These transparent areas are caused by above-average partial compaction of the fibres during smoothing calendars, which is due to mass fluctuations in the paper. The DOMAS module of the same name enables you to analyse the **blackening** of uncoated, satin-finished papers (SC paper) and evaluate their quality – **quickly** and **intuitively**.

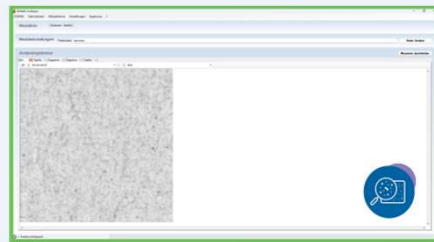
- **Objective quality assessment**
- **Efficient process control**
- **Automatic report generation** for documentation and tracking
- **Open system architecture** with interfaces to operating data systems (ERP)

From the analysis to the result: this is how it works

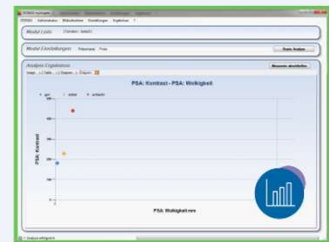
A calibrated scanner captures sheets up to **A4 format** with a resolution of **1200 dpi** or higher. The module analyses the image either on the basis of **two-dimensional grey value** distribution or using **power spectral analysis**. The evaluation includes analysis of **contrast**, **cloudiness** and **orientation**. The results are processed in a structured manner and can be exported directly as a **table** or **image** for further processing.



1) Scan the sheet



2) Analysis of blackening



3) Export results as diagram

Would you like to see the module in action?

Are you interested in a live demonstration or a non-binding consultation, please contact us.

Papiertechnische Service- und
Vertriebs GmbH

Pirnaer Straße 37
01809 Heidenau



Mr. Jörg Hempel

Sales Manager

+49 3529 551 659

+49 172 8695 459

joerg.hempel@ptspaper.de