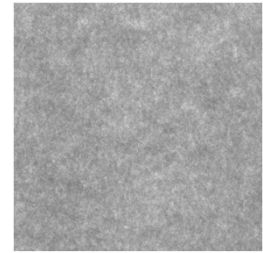




FIBRE based
solutions



DOMAS*multispec* Modul: Formation



Your key to objective quality control

The DOMAS-modul "**Formation**" enables the precise and automatic analysis the uniformity of the distribution of fibres and other paper components in the paper. The system recognises and assesses the uniformity of the paper in transmitted light in a manner that is both **quick** and **intuitive**, in **accordance** with the **relevant standards**.

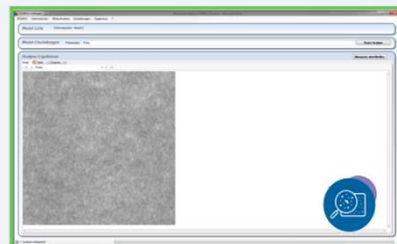
- **Objective quality assessment** according to Zellcheming Merkblatt A TEST 1/2011
- **Efficient process control** - ideal for applications such as Adjustment of paper machines
- **Automatic report generation** for documentation and tracking
- **Open system architecture** with interfaces to operating data systems (ERP)

From the analysis to the result: this is how it works

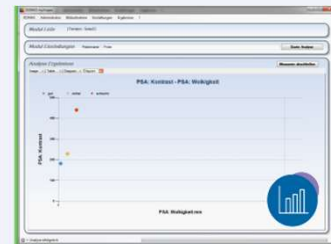
The calibrated scanner is able to capture sheets up to **A4 format** with a resolution of **210 dpi** or higher. The module employs a sophisticated image analysis process that utilises a **two-dimensional grey value distribution** or a **power spectral analysis**. The evaluation process involves a thorough analysis of **contrast, cloudiness and orientation**. The results are processed systematically and can be exported directly as a **table** or **image** for further processing.



1) Scan the sheet



2) Analysis of formation



3) Export results as diagram

Would you like to see the module in action?

Are you interested in a live demonstration or a non-binding consultation, please contact us.

Papiertechnische Service- und
Vertriebs GmbH

Pirnaer Straße 37
01809 Heidenau



Mr. Jörg Hempel

Sales Manager

+49 3529 551 659

+49 172 8695 459

joerg.hempel@ptspaper.de