

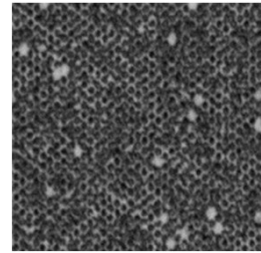


FIBRE based
solutions



DOMAS*multispec*

Modul: Missing Dots



Your key to objective quality control

The DOMAS module **Missing Dots** enables you to analyse missing dots in gravure printing. The system detects and evaluates the gravure printing quality in the scanned sheets under reflected light – **quickly** and **intuitively**. The size and quality of the existing dots are also taken into account.

- **Objective quality assessment**
- **Efficient process control** e.g. for quality assessment of gravure printing products
- **Automatic report generation** for documentation and tracking
- **Open system architecture** with interfaces to operating data systems (ERP)

From the analysis to the result: this is how it works

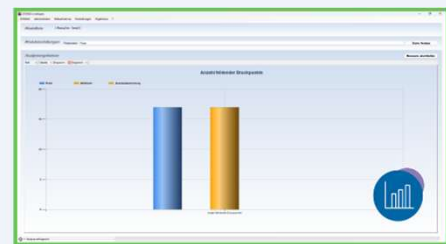
A calibrated scanner captures sheets up to **A4 format** with a resolution of **2400 dpi** or higher. The module analyses the print image for missing dots and irregularities caused by variations in dot area and intensity. The results are processed in a structured manner and can be exported directly as a **table** or **image** for further processing.



1) Scan the sheet



2) Detect missing dots



3) Export results as diagram

Would you like to see the module in action?

Are you interested in a live demonstration or a non-binding consultation, please contact us.

Papiertechnische Service- und
Vertriebs GmbH

Pirnaer Straße 37
01809 Heidenau



Mr. Jörg Hempel

Sales Manager

+49 3529 551 659

+49 172 8695 459

joerg.hempel@ptspaper.de