

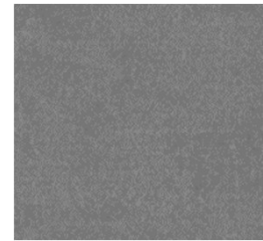


FIBRE based
solutions



DOMAS*multispec*

Modul: Mottling



Your key to objective quality control

The DOMAS module **Mottling** enables you to objectively evaluate the uniformity or unevenness of flexographic or offset printing in solid or halftone areas with high coverage. The system detects and evaluates printing irregularities in the scanned sheets under reflected light – **quickly** and **intuitively**.

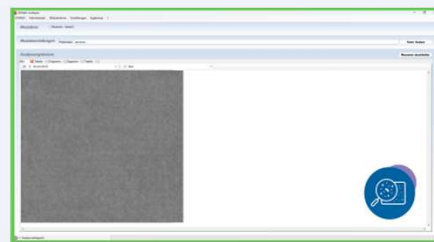
- **Objective quality assessment**
- **Efficient process control** - ideal for the quality control of paper and printing
- **Automatic report generation** for documentation and tracking
- **Open system architecture** with interfaces to operating data systems (ERP)

From the analysis to the result: this is how it works

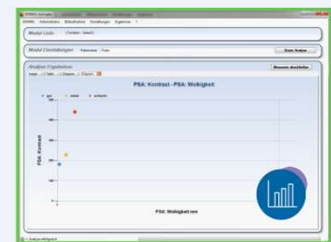
A calibrated scanner captures sheets up to **A4 format** with a resolution of **420 dpi** or higher. The module analyses the image either on the basis of **two-dimensional grey value distribution** or using **power spectral analysis**. The evaluation includes the **mottling index**, which is based on the **contrast** of printing irregularities. The results are processed in a structured manner and can be exported directly as a **table** or **image** for further processing.



1) Scan the sheet



2) Analysis of printing unevenness



3) Export results as diagram

Would you like to see the module in action?

Are you interested in a live demonstration or a non-binding consultation, please contact us.

Papiertechnische Service- und
Vertriebs GmbH

Pirnaer Straße 37
01809 Heidenau



Mr. Jörg Hempel

Sales Manager

+49 3529 551 659

+49 172 8695 459

joerg.hempel@ptspaper.de