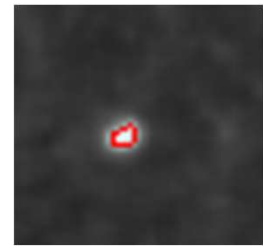




FIBRE based
solutions



DOMAS*multispec* Modul: Pinholes



Your key to objective quality control

The DOMAS module for **pinhole** measurement enables you to analyse tiny holes or transparent areas in paper, known as pinholes. The system detects and measures pinholes in scanned sheets using transmitted light – **quickly** and **intuitively**.

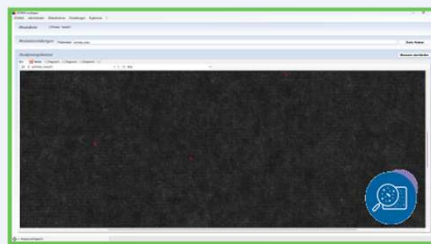
- **Objective quality assessment** instead of manual particle counting
- **Efficient process control** - ideal for applications such as printing and impregnation
- **Automatic report generation** for documentation and tracking
- **Open system architecture** with interfaces to operating data systems (ERP)

From the analysis to the result: this is how it works

The calibrated scanner can capture **A4-sized** sheets with a resolution of **1500 dpi**. The module uses a sophisticated image analysis process that utilises a **two-dimensional grey value distribution**. The evaluation covers the **number** and **size distribution** of the pinholes as well as their **intensity distribution**. The results are systematically processed and can be exported directly as a **table** or **image** for further processing.



1) Scan the sheet



2) Analysis of pinholes



3) Export results as diagram

Would you like to see the module in action?

Are you interested in a live demonstration or a non-binding consultation, please contact us.

Papiertechnische Service- und
Vertriebs GmbH

Pirnaer Straße 37
01809 Heidenau



Mr. Jörg Hempel

Sales Manager

+49 3529 551 659

+49 172 8695 459

joerg.hempel@ptspaper.de