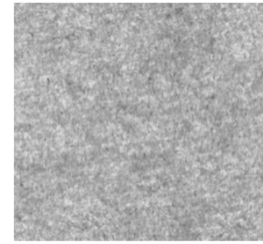




FIBRE based
solutions



DOMAS*multispec* Modul: Structure



Your key to objective quality control

With the DOMAS module “**Structure**” enables you to analyse regular structures (e.g. screen, felt and perforation shadow marks) in paper. The system recognises and evaluates the structures in the scanned sheets in transmitted light – **quickly** and **intuitively**.

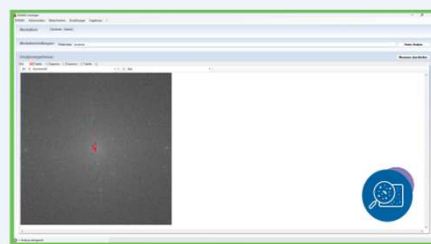
- **Objective quality assessment**
- **Efficient process control** - e.g. for selecting suitable covering materials
- **Automatic report generation** for documentation and tracking
- **Open system architecture** with interfaces to operating data systems (ERP)

From the analysis to the result: this is how it works

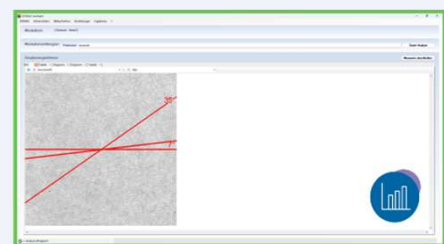
A calibrated scanner captures sheets up to **A4** format in transmitted light with a resolution of **600 dpi** or higher. The module analyses the image based on **fast Fourier transform (FFT)**. The evaluation includes analysis of the wavelength, angle and intensity of the structures. The results are processed in a structured manner and can be exported directly as a **table** or **image** for further processing.



1) Scan the
sheet



2) FFT analysis



3) Output angle

Would you like to see the module in action?

Are you interested in a live demonstration or a non-binding consultation, please contact us.

Papiertechnische Service- und
Vertriebs GmbH

Pirnaer Straße 37
01809 Heidenau



Mr. Jörg Hempel

Sales Manager

+49 3529 551 659

+49 172 8695 459

joerg.hempel@ptspaper.de