



FIBRE based solutions

# DOMASmultispec

## Image analysis for the paper and printing industry

---



Testing  
Services



Industrial  
Solutions



Research



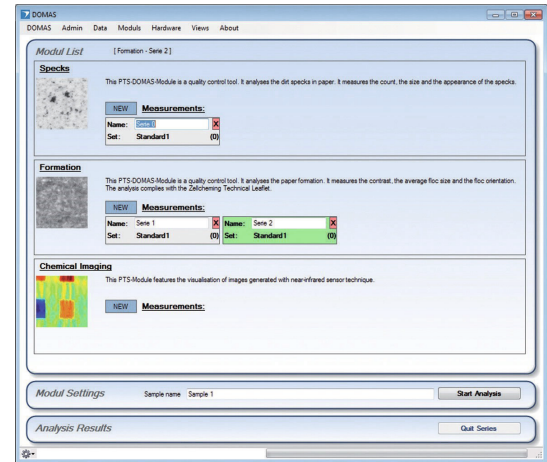
Events

# DOMASmultispec – Image analysis for the paper and printing industry

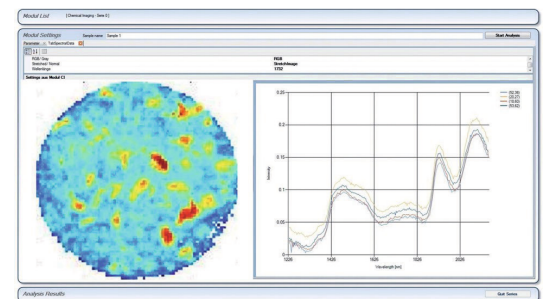
PTS-DOMASmultispec is an advanced modular image analysis system. It is based on standard hardware and software components including personal computers, WINDOWS™ and EXCEL™ which are supplemented by dedicated modules for paper industry applications. The available modules enable automatic and flexible analyses of

- Dirt specks
- Stickies
- Sheet formation
- Blackening
- Pin-holes
- Structures
- Coverage
- Pitting
- Bleeding & Wicking
- Mottling
- Missing Dots
- Heliotest
- Chemical Imaging

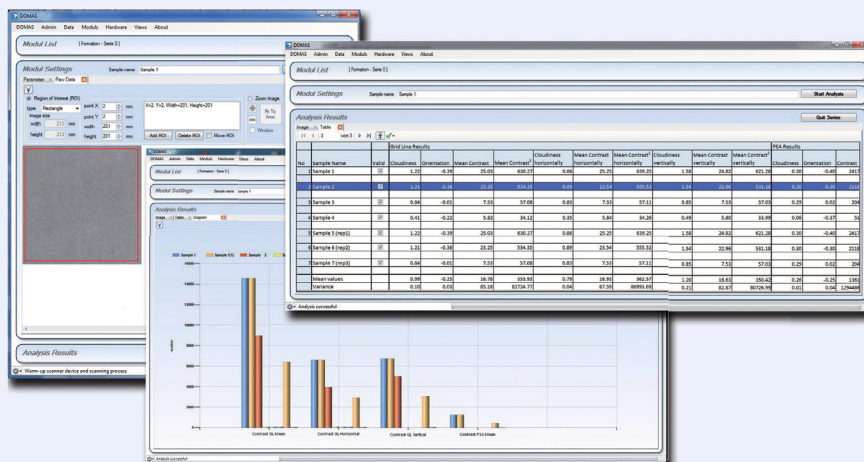
**Images are acquired** with a specially calibrated flat-bed scanner, a calibrated camera system or – for the Chemical Imaging module – an NIR camera. The fusion of image-analytical data with the chemical information obtained by the **NIR module** creates completely new evaluation options. The analytical results of each module are shown in the form of clearly arranged tables and diagrams.



The start-up screen of DOMASmultispec presents the proven modularity of the system



NIR module: false colour image and spectrum



Regions of interest und reports of DOMASmultispec formation module

## Special advantages:

- Easy to use (results are available after three mouse clicks)
- Compliance with standards and standard methods (ISO, Tappi, INGEDE)
- Measurement parameters can be defined and stored
- Regular updates
- Online assistance via Teamviewer
- Open interfaces with enterprise data systems
- Installable on any PC with standard Windows software
- More than 200 users worldwide

## Papiertechnische Stiftung (PTS)

Pirnaer Straße 37 · 01809 Heidenau

P +49 3529 551 - 60  
E info@ptspaper.de

www.ptspaper.com



## Contact person

Jörg Hempel  
P +49 3529 551-659  
M +49 172 8695459  
E joerg.hempel@ptspaper.de

